

SMA 2W 30dB 18G Attenuator

P.N. : F01-B1830-01

Products feature

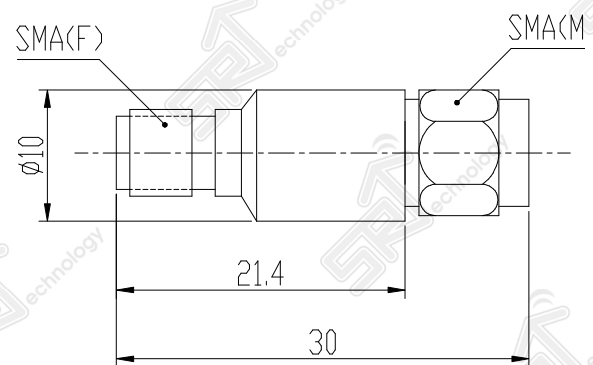
- Reliable Attenuation & V.S.W.R
- Easy maintenance
- Wide broadband frequency application
- Directional 2 watt rating

Electrical specification

Item	Specification
Frequency range(MHz)	DC ~ 18 GHz
Impedance (Nominal)	50Ω
Average Power rating	2 Watt
Peak Power(5 μs)	0.25 KW
Attenuation	30 dB +/- 1.2dB/max
V.S.W.R (Max)	1.35 : 1
Connector type	SMA male(Input) – female(Output)

Material specification

Item	Specification
Dimension	Φ10*30mm
Temperature Range	-55°C ~ 125°C
Weight	10 g



Electrical performance

